

Relativity Collect and X1: Streamlining the Global Collection Process

About Our Presenters



Greg Evans
Product Manager
Relativity



John Patzakis
Executive Chairman &
Chief Legal Officer
X1

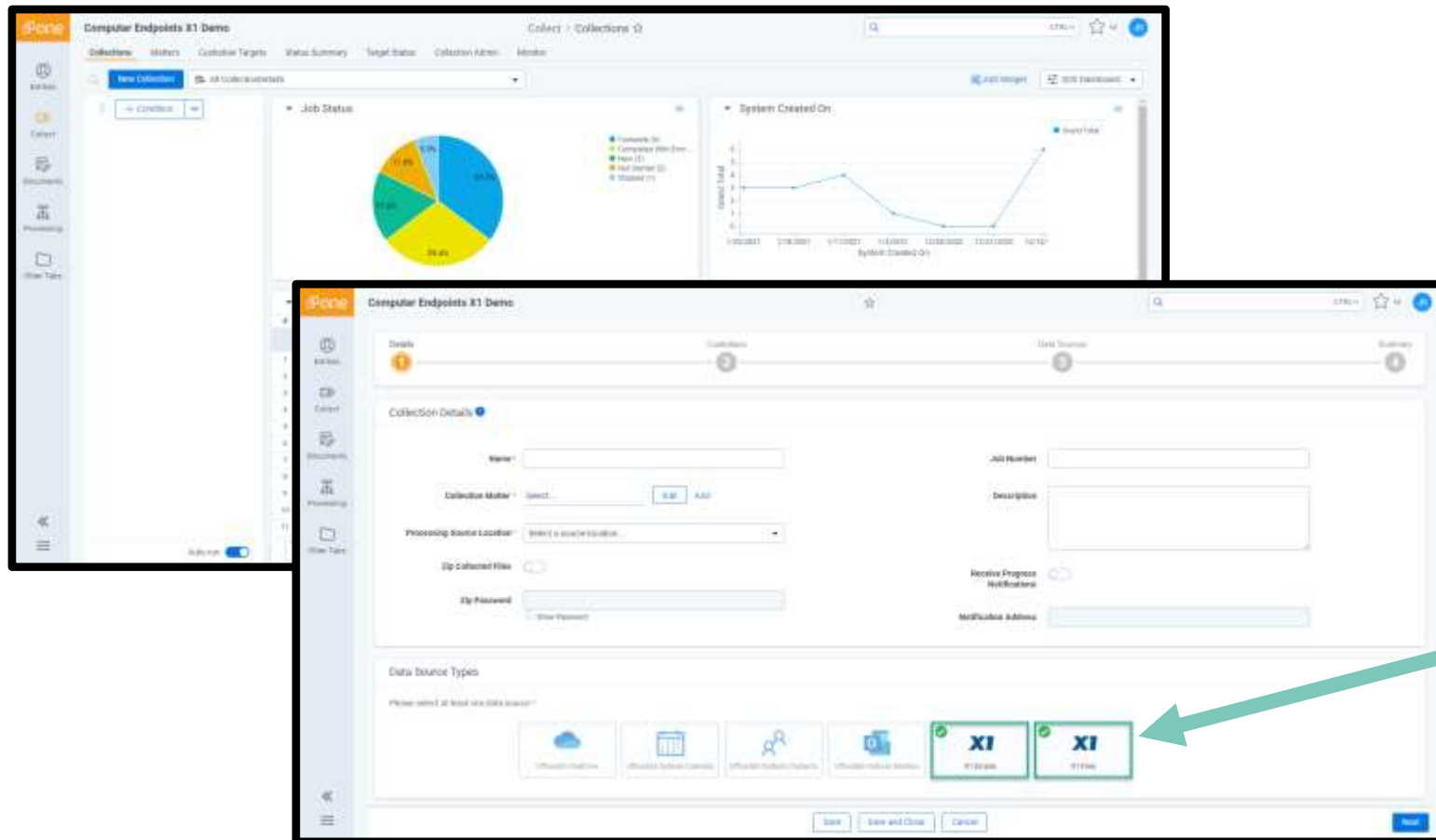
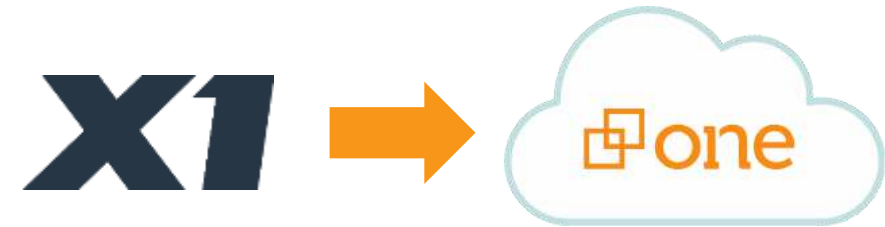
Agenda

- Overview of the Relativity and X1 Integration
- Benefits of cloud-based remote collection with an integrated solution
- How the integration processing works behind-the-scenes, including preservation and collection
- Upcoming features on the roadmap
- Demonstration and Interactive Q&A

Global Collections with the X1 and Relativity Integration

Relativity Collect

X1 Enterprise is seamlessly leveraged through the Relativity Collect interface to execute a collection of endpoint files and emails for clients. The X1 collection automatically populates the designated Relativity workspace.



X1 Files - Files are collected from custodian laptops and desktops. Collect users can apply keywords, date ranges, and/or other metadata to precisely filter for targeted data collection.

X1 Emails - Emails and attachments are collected from custodian laptops and desktops. Administrators can configure collection parameters and specify a date range for email messages that you want to discover.

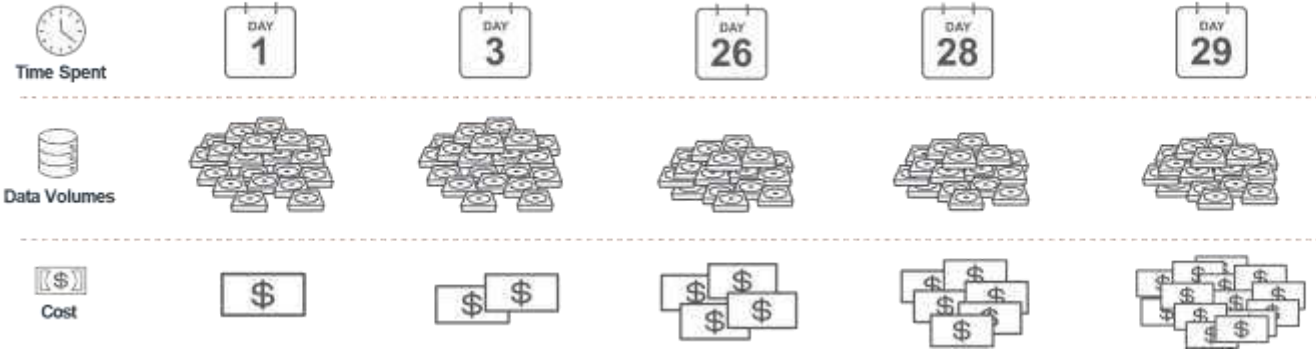
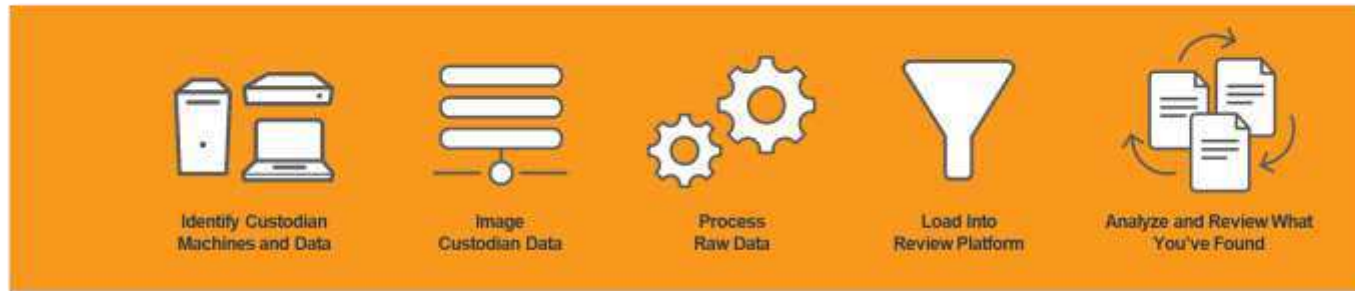
Key Benefits of the Relativity and X1 Integration

- Dramatically Increased Speed to Review
 - Remote collection measured in hours instead of days or weeks
- Bypass Costly Processing and Manual Handoffs
 - One-click upload of collected data into Relativity workspace
- Highly Optimized Remote Collections
 - Access remote workers without VPN

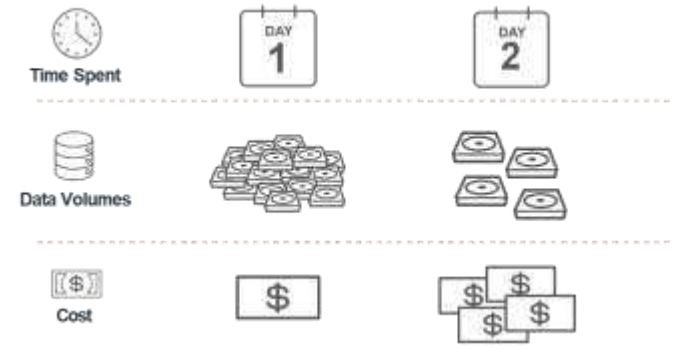


Streamlining the Traditional Collection Process

Traditional Approach:



X1/Relativity Approach:



How the X1 Enterprise™ Integration with Relativity Works



Search Criteria
Defined from within
RelativityOne UI



Instructions Sent
from X1E to the
Custodian Laptops



In-place
at the Office



In-place
at Home



In-place
at a
Coffee Shop



X1E Exports Responsive
Documents from Custodians
Directly into RelativityOne



Processing Integration

- Speeds up time to review
- Collections go directly to a R1 Processing Source Location
- One-click to submit a collection to processing
- No overlays of metadata required

Feature Roadmap

- Support for Large File Shares
- Pre-Collection ECA
- Pre-Collection Analytics
- Information Governance Workflows



Demonstration

Questions



Contact Us

Relativity.com

X1.com

sales@relativity.com

info@x1.com

Greg Evans

gregory.evans@relativity.com

John Patzakis

jpatzakis@x1.com